

BVE 250 1170 S.5833



Com.: BA170135.06.17 190 bar max
Art.-Nr.: 272514005833
HKS-Dreh-Antriebe GmbH
63607 Wächtersbach
Germany, Tel. 06053-6163-0

A.f.B.
Arbeitswerkzeuge für Baumaschinen
D-95326 Kulmbach · Tel. 092 21/801 13-0

FOR	EM1800070
S.-NR.	1990757
MANUFACTORY DATE	01/17
WEIGHT (KG)	530
VOL./LTR.	700
HYDR. PRESS. (BAR)	
TOOTH-SYSTEM	

CE

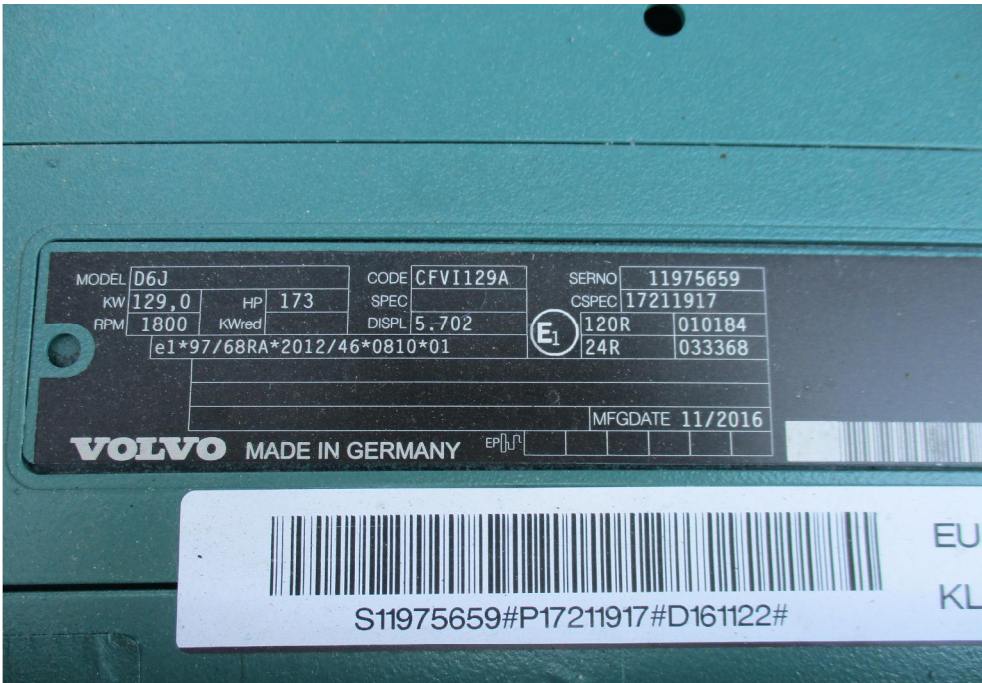
OilQuick[®]

DESIGNATION:	Quick coupler
TYPE:	QQ70/55
SERIAL NO:	QQ16925
MANUF. YEAR:	2017
MAX PRESSURE:	35 MPa
MAX HOOK LOAD:	10000kg
WEIGHT:	600kg

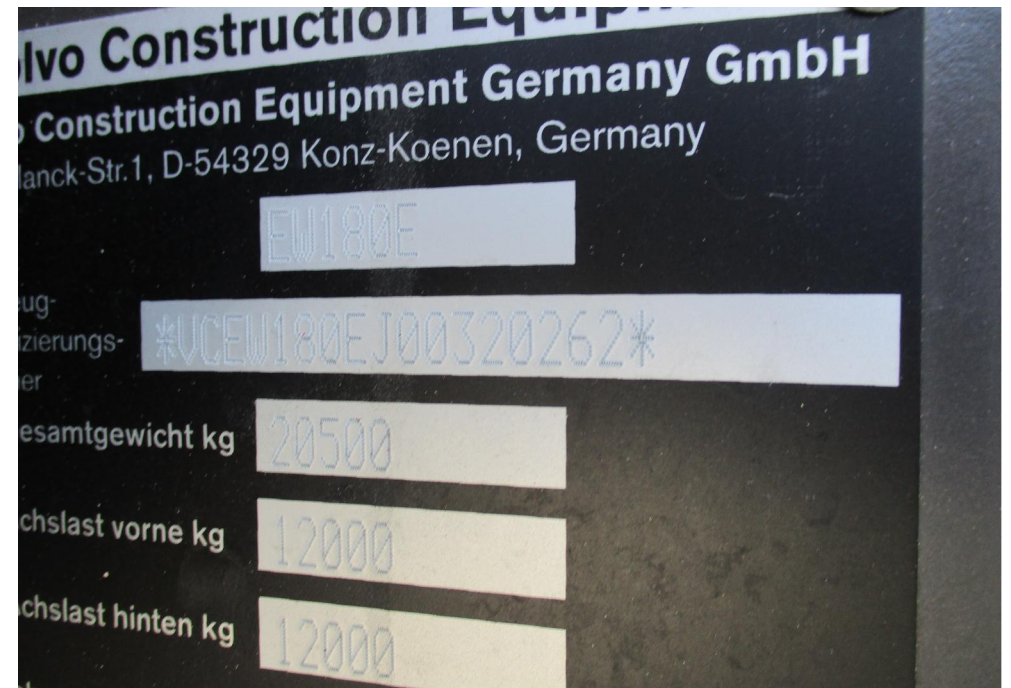
OilQuick AB, Box 1055
824 12 Hudiksvall, SWEDEN
www.oilquick.com

CE

411 8161









D-95326 Kulmbach · Tel. 09221/801 13-0

FOR EW180 0Q70
S.-NR. 1990457830
MANUFACTORY DATE 01/217
WEIGHT (KG) 750
VOL./LTR. 850
HYDR. PRESS. (BAR)
TOOTH-SYSTEM MG20F



D-95326 Kulmbach · Tel. 09221/801 13-0

FOR EW180 0Q70
S.-NR. 1990457830
MANUFACTORY DATE 01/217
WEIGHT (KG) 590
VOL./LTR. 520
HYDR. PRESS. (BAR)
TOOTH-SYSTEM MG20F

